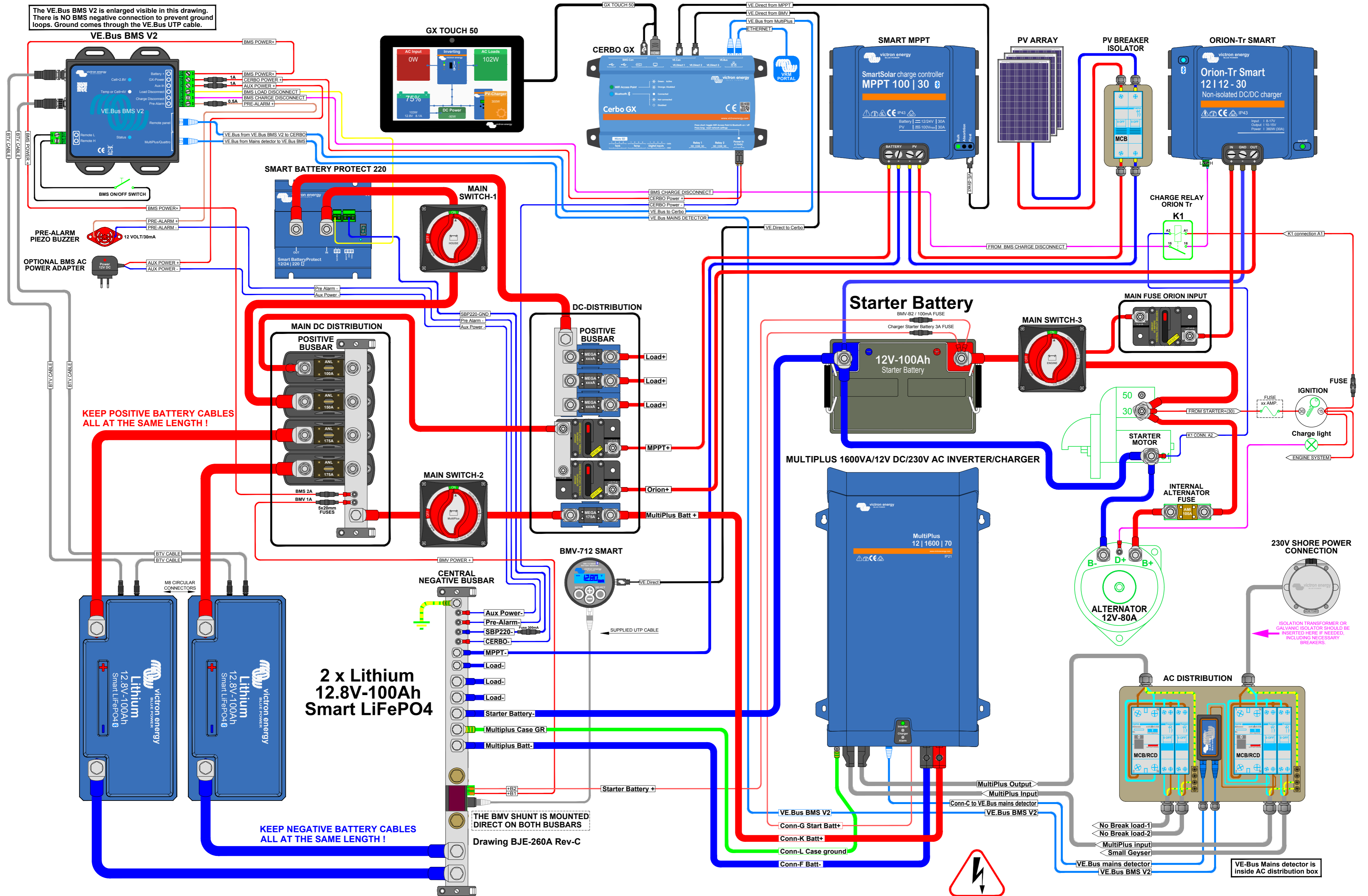


The VE.Bus BMS V2 is enlarged visible in this drawing. There is NO BMS negative connection to prevent ground loops. Ground comes through the VE.Bus UTP cable.



KEEP POSITIVE BATTERY CABLES ALL AT THE SAME LENGTH!

KEEP NEGATIVE BATTERY CABLES ALL AT THE SAME LENGTH!

2 x Lithium 12.8V-100Ah Smart LiFePO4

THE BMV SHUNT IS MOUNTED DIRECT ON BOTH BUSBARS

Recommended AC Out cable/breaker size MultiPlus
 With Power assist the MultiPlus can add 1.3 KW to the output load when needed. Together with the adjustable 16A input this all adds up to the max sum of input and output current of 16+5.6=21.6A. An Earth leakage with breaker or a combination MCB/RCD must be installed on the output. Cable size must be adjusted accordingly.

Recommended DC cable/fuse size MultiPlus
 0-5 m cable length: 50SQmm
 Cable length stands for the total distance between the battery connections plus and minus and the MultiPlus connections ! Recommendations are without other loads in the system and these also should be taken into account for proper main battery, main fuse & main switch cables ! INTERNAL Fuse size should be 200A.

Recommended AC in cable/breaker size MultiPlus
 AC IN must be protected by a circuit breaker rated at 16A max or less. This depends heavily on the size of the connected power source. The input current must be adjusted to fit the size of the connected power source. The breaker and cable size for AC IN should be adjusted accordingly.

WARNING
 230 VOLT IS EXTREMELY HAZARDOUS DO NOT TOUCH ANY LIVE WIRED PARTS OF THE INSTALLATION ! WHEN IN DOUBT, ALWAYS CONSULT YOUR VICTRON DEALER !

Drawing BJE-260A Rev-C